

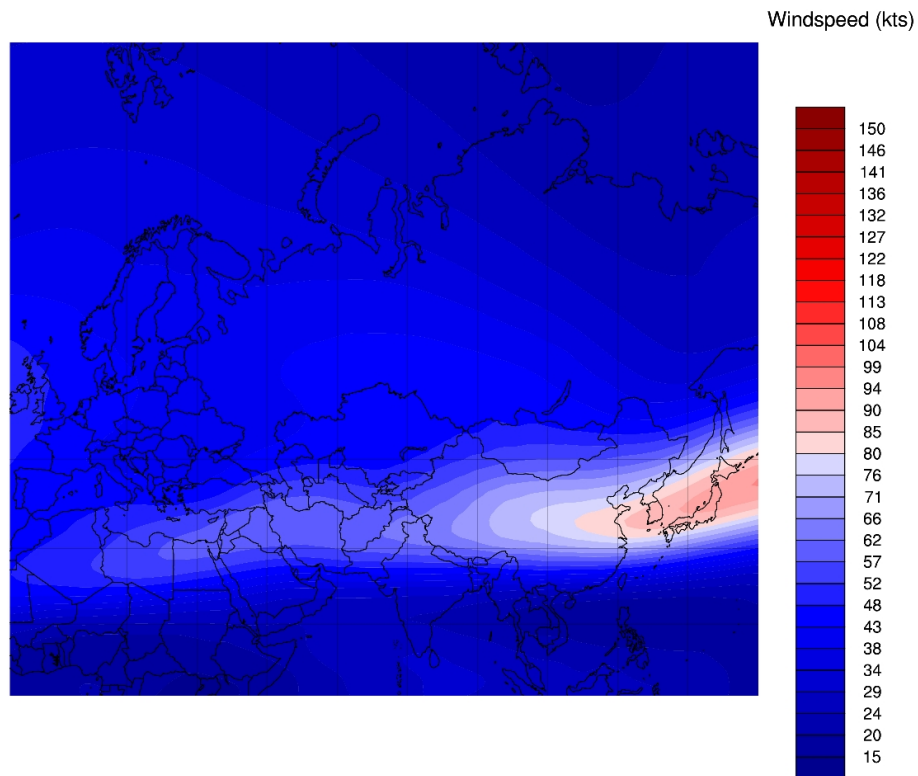
KLM-request Climatology of wind on east-tracks  
Concept  
Dirk Wolters

December 14, 2010

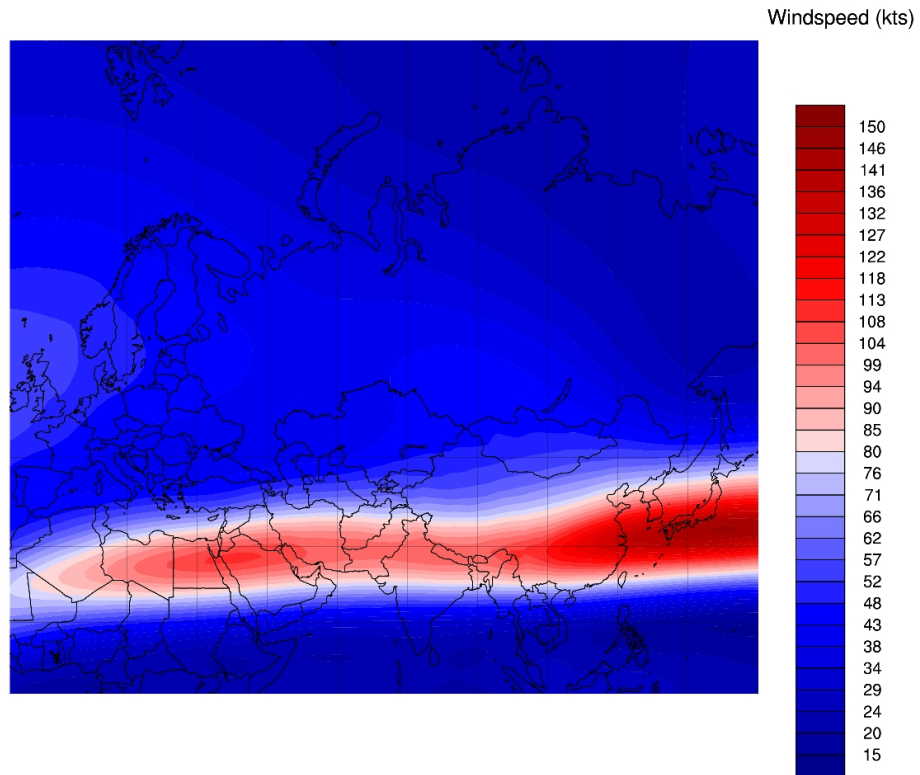
Summary:

On behalf of KLM-OCC the climatology of wind near tropopause levels are calculated with ERA-Interim data covering the period 1989-2010, per year and per season at levels ranging from 400 to 150 hPa (equivalent to flightlevels between 240 and 450). The output is under discussion late December 2010.

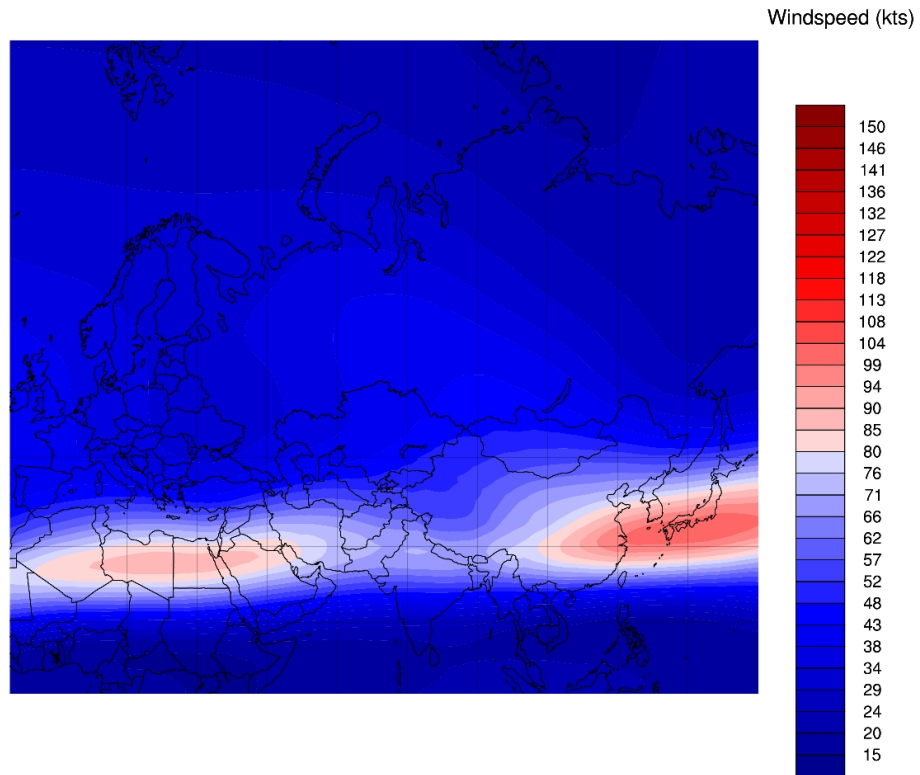
The pictures shown are examples at 200 hPa.



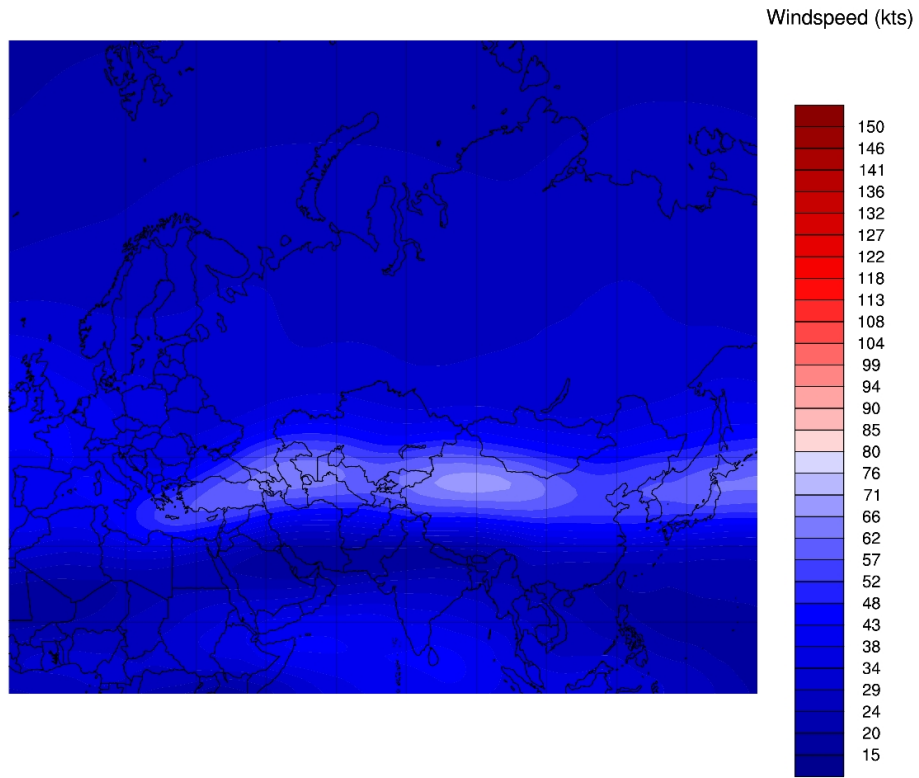
Average windspeed at 200 hPa from ERA-Interim 1989-2010, Autumn



Average windspeed at 200 hPa from ERA-Interim 1989-2010, Winter



Average windspeed at 200 hPa from ERA-Interim 1989-2010, Spring



Average windspeed at 200 hPa from ERA-Interim 1989-2010, Summer